



CURTAIN WALL SYSTEMS

SUPERIOR SY-50/60

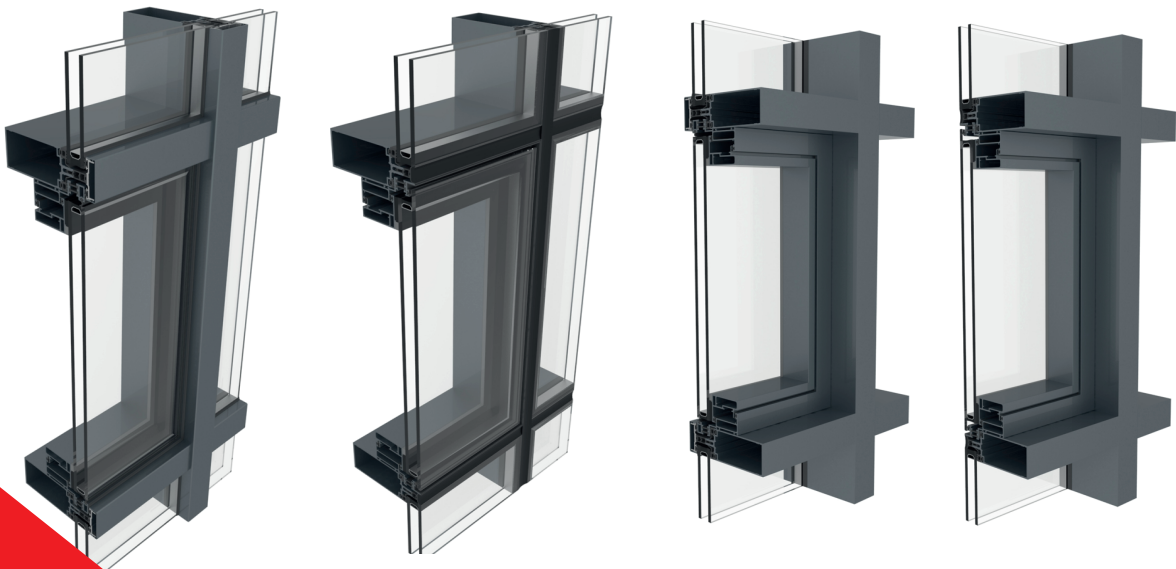
GERMAN ENGINEERING SINCE 1967

INTRODUCTION

SYKON SY-50/60 Curtain wall Sustainable architecture facades and roofing system provide maximum energy efficiency and offers unlimited highest quality design freedom and allows maximum transparency with integration of functional elements for several glazing options at technical solutions to comply with specified grade of thermal insulation.

Glazing Options for standard pressure plate, structural glazing and structural clamped facades meet with stability and safety requirements. SYKON SY-50/60 offers curtain wall for interior and exterior of the building to meet the architectural requirements for aluminum mullion/transom facades. Combined with the best performance characteristics and cost-effective construction.

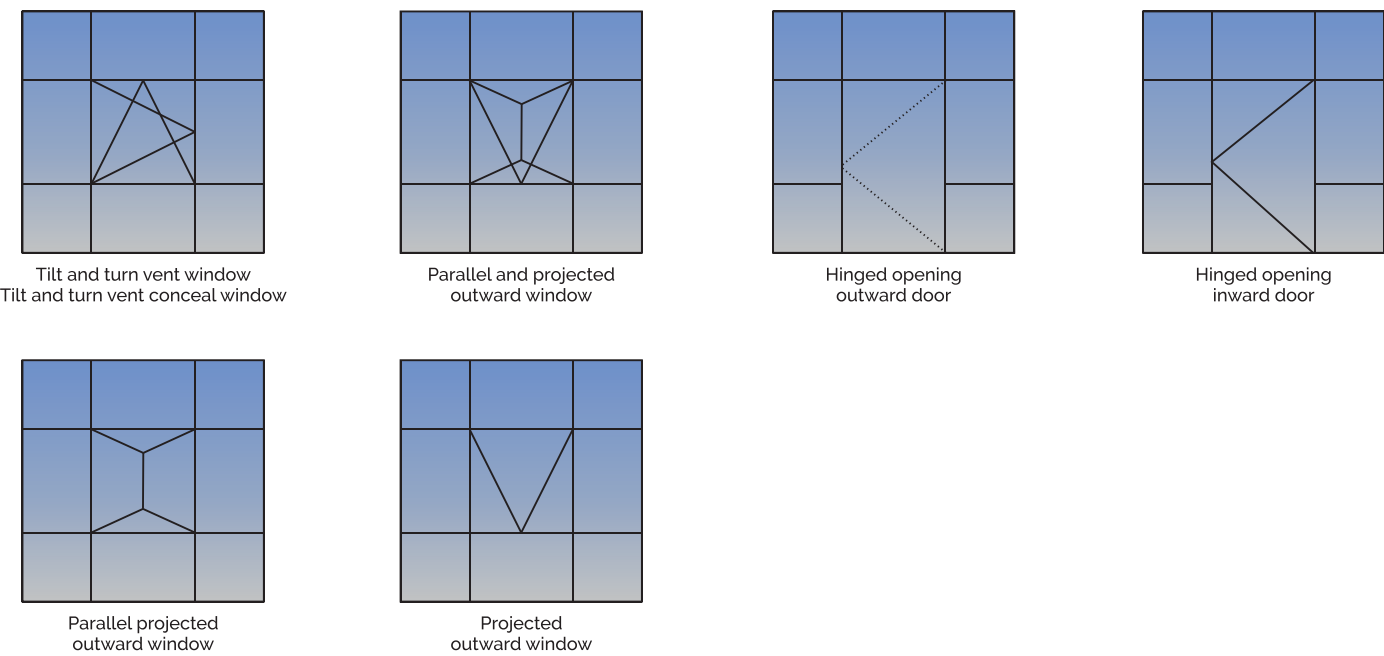
Curtain wall system SY-50/60 offers complete architectural facade variety of design solution including the passive house-certified with triple glazing facades applicable for passive energy efficient and high thermal insulation integrated with concealed top hung window, turn & tilt hidden vent, skylight roof vent and parallel opening window combined with a greater load transfer at the same time effective water evacuation system.



www.sykon.ae
www.sykon.de







TYPOLOGIES



TECHNICAL CHARACTERISTICS

Exterior visible width	50 mm
Mullion depth	50 - 250mm
Transom depth	50 - 250 mm
Glazing	Stick type with EPDM gaskets
Glass Thickness	24 - 54 mm
Mullions max inertia	$I_{xx} = 1454.252\text{cm}^4$ $I_{yy} = 77.0470 \text{ cm}^4$
Transoms max inertia	$I_{xx} = 1454.252\text{cm}^4$ $I_{yy} = 77.0470 \text{ cm}^4$

CERTIFICATES

	Air permeability EN 12152	CLASS AE
	Watertightness EN 12154	CLASS RE 1050
	Resistance to wind load EN 13116	$\pm 3,0 \text{ KN/M}^2$
	Thermal Insulation EN 10077-2	$U_f = 1,4 \text{ W/m}^2 \text{ K}$

