



PANORAMIC-SLIDE SYSTEMS

SYKOTHERM SL-20

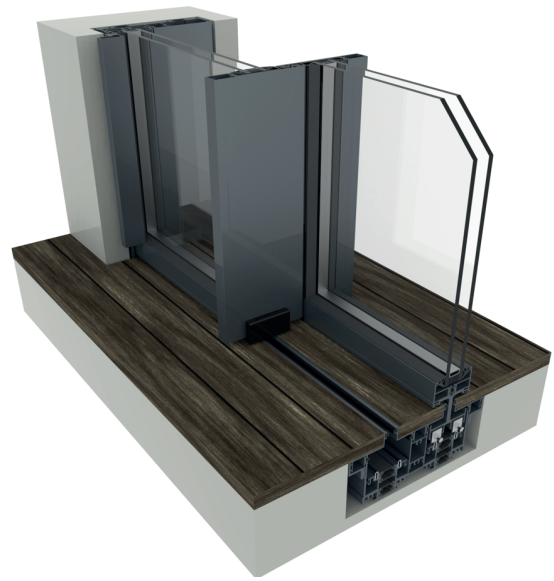
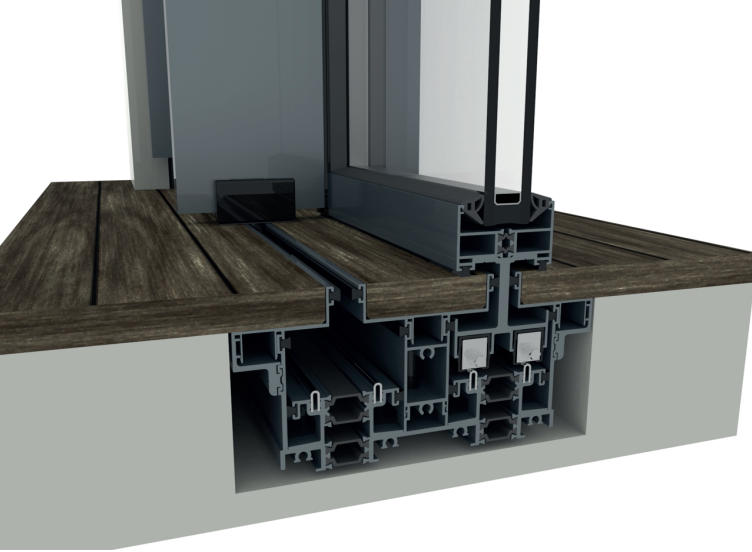
GERMAN ENGINEERING SINCE 1967

INTRODUCTION

An innovative sliding system that is especially suitable for large dimensions. With an almost invisible aluminium frame, it allows maximum light incidence with a glass content of 94 percent. Glazing can be used with a thickness of up to 45 mm, providing the best acoustic and thermal results. Choose between fixed and sash frames with 2 or 4 sashes, as a two or three-rail system. The maximum sash height is up to 6 meters, with no practically limit on the sash weight, depending on the workability (manually or electrically operated). The frame height can be up to 100 MM with multiple options.. The overlap width in the central joint of only 20 mm can be completely concealed at the bottom, sides and top. On request, the panorama sliding systems can be opened electrically, thus allowing larger sashes. The sash elements can be equipped with multiple locking systems and locking cylinders. The roller positioning directly in the frame and a reinforced stainless steel rail ensure improved sliding of the running sash. The classic installation with a revolving frame and straight-line recessed sashes allows easy installation and removal of a sash in case of maintenance, glass breakage, profile damage, etc...



www.sykon.ae
www.sykon.de



TECHNICAL CHARACTERISTICS

Visible aluminium face width	Concealed profile
Frame height	80 mm
Frame width	162 mm
Sash height	29 mm
Sash width	58 mm
Sash weight	up to 400 Kg
Glazing	45mm
Insulation	Polyamides, PVC
Interlocking profile width	20 mm

CERTIFICATES



Air permeability EN 1026, EN 12207

CLASS 4



Watertightness EN 1027, EN 12208

CLASS E750



Resistance to wind load EN 12210, EN 12211

CLASS C2



Thermal Insulation EN 10077-2

U_w from 1,1 W/m²k

Panoramic-slide Systems



SYKON
Profilsysteme aus Aluminium



THERMAL SLIDING SYSTEM