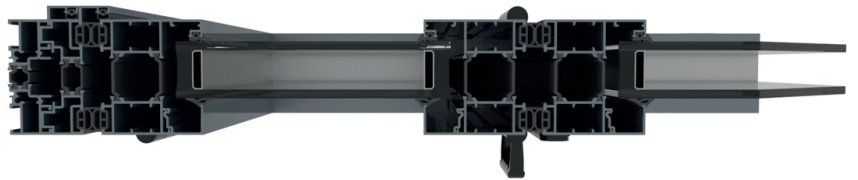




INSULATED FOLDING SYSTEMS

BI-FOLD S77-F

GERMAN ENGINEERING SINCE 1967

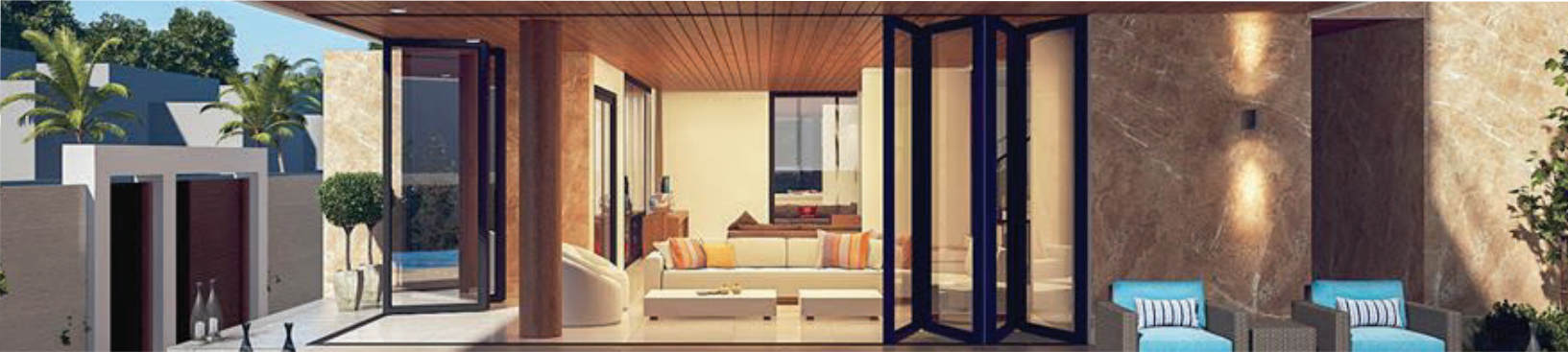


INTRODUCTION

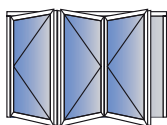
The Bi-Fold S77 was developed based on the existing S77 profiles & accessories of windows and doors and was tested by PIV European test facility. It has a very large sash height and width which offers maximum design freedom. The maximum sash height can be up to 3.5 Meters. We have a wide range of configuration options: outward and inward opening folding systems, even and odd number of leaves, combination of passage door with folding systems, for end variations for double-sided folding systems, 90° solutions. Up to 14 leaves can be used in one folding system. The threshold can be recessed into the floor to optimize accessibility. The aesthetic effect is underlined by high-quality rollers and fittings embedded in the sash profile.



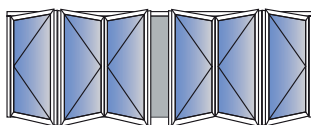
www.sykon.ae
www.sykon.de



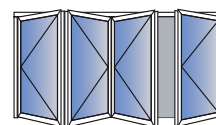
TYOLOGIES



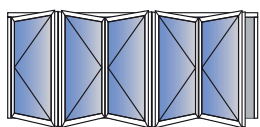
TRIFOLDING DOOR (3 LEAF)



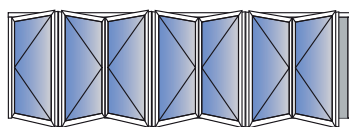
SIXFOLDING DOOR (6 LEAF)



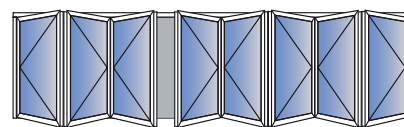
FOURFOLDING DOOR (4 LEAF)



FIVEFOLDING DOOR (5 LEAF)



SEVENFOLDING DOOR (7 LEAF)



EIGHTFOLDING DOOR (8 LEAF)

TECHNICAL CHARACTERISTICS

Visible aluminium face width	105 mm
Frame height	46,5 mm
Frame width	77 mm
Sash height	68 mm
Sash width	77 mm
Sash weight	Upto 120 Kg
Glazing	up to 52 mm
Sealing fro glazing	EPDM or Silicone Rubber
Insulation	Polyamide 16/32 MM

CERTIFICATES



Air permeability EN 1026, EN 12207 CLASS 4



Watertightness EN 1027, EN 12208 CLASS E1650



Resistance to wind load EN 12210, EN 12211 CLASS A3



Burglar resistance EN 1627-1630 RC3



Thermal Insulation EN 10077-2 U_f = from 1.1 W/m² K depending on type, dimensions and glazing



Sound reduction EN 14351, EN 717 R_w (C;Ctr) = 41 (-2;-5) db

